

ISLES OF SCILLY LOCAL OFFER NEWSLETTER



Welcome to the second Isles of Scilly Local Offer Newsletter. In this issue we will be highlighting and celebrating the successes, progress and great partnership work carried out this academic year for children and young people with SEND and their families on the Isles of Scilly.

Youth Participation

The first SEND youth participation group, asking for their opinions on images for the local offer website, proved hugely successful with great numbers attending (honestly this had nothing to do with the chip lunch provided! 😊). This happened with great collaboration and organisational work from Parent/Carer Forum, the Local Authority and Five Island Academy. It was a joy to watch the children and young people engage in the conversations about the images and they were confident in expressing their opinions. We had some great feedback:

"Ok to use both sets of images as it would be fair"

"everyone's vote counts"

"Make me feel happy"

This was followed up with an interactive activity where young people went out to take photos of local landmarks and buildings so their own images can be added to the website.

In March our SEND young people's group headed out in the Council's electric car with Jaclyn Pearson from the RSPB and Jim Johnson from Children's Services for a day of Geocaching on St Mary's! Participants used the Geocaching app and/or a GPS device to navigate to cleverly hidden containers with it's hidden treasures inside. The young explorers learnt all sorts including, wildlife identification, map reading skills, local heritage facts, puzzle solving and teamwork, all bundled up in a package of fun, friendship and exercise!



"I liked that we were learning about the island, finding geocaches that I hadn't noticed before, some of the routes I walk with my dad and can show him next time. I learnt a lot today"

"I've learnt about starlings, herring gulls, sparrows"



Short Breaks

Parent/Carers Forum, The Local Authority and Parents met to look at the short breaks offer and statement. Alas! youth participation in this was cut short because of Covid-19 lockdown. However plans are afoot to resume this shortly!

The Isles of Scilly Council was a frontrunner in adapting the short breaks offer during covid-19 for families with the head of Children's Services saying:

"During Covid we were able to use the short breaks offer more flexibly to support a wide range of families in the absence of physical short break activities".

Local Offer

On the 10th November 2019 members of the public, representatives from the Parent/Carer Forum and the Authority were invited to collaboratively work together to discuss the local offer, what information would be relevant, how they would like the information presented and how the website would look.

The result was the local offer website going live at the end of December 2019.

www.localofferscilly.org.uk

This user friendly website proved to be a great and easy platform to communicate information to families and it was used as a template to create a website with a broader remit for families on Scilly.

www.familyscilly.org.uk

Partnership working

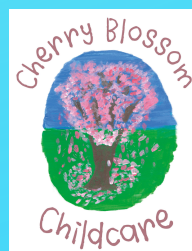
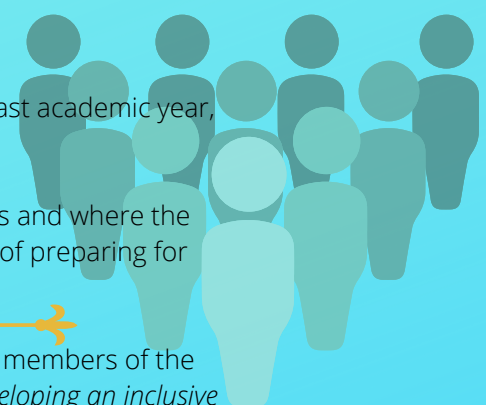
There has been some excellent partnership and development work over the last academic year, as highlighted above, but also including:

A preparing for adulthood workshop to identify what provision is on the Islands and where the gaps are. It was also a chance for people to share their ideas and experiences of preparing for adulthood and the transition to adult health and social care services.

The SEND Inclusion Charter workshop was well attended by professionals and members of the public. From this the SEND Inclusion Charter was formed with the ethos of *developing an inclusive culture and better services for children and young people with SEND.*

A focus for this academic year has been Education Health Care Plans (EHCP) starting with looking at improving the Annual Review process. This was followed up with a review of the EHCP paperwork in co-production with representatives of the Parent Carer Forum. You can now view the amended EHCP Paperwork and guidance on the local offer website. Going forward we are looking at a much more parent and child friendly process with a real focus on specific strategies with achievable and measurable goals.

There have also been the regular progress and development meetings that take place throughout the year. Joining us in these meetings as a positive working partnership from health is Natalie Jones. Natalie Jones has joined us on the Isles of Scilly as our designated strategic health representative for the interim for the Isles of Scilly she is the Chief Nursing Officer, NHS Kernow CCG..



Kernow
Clinical Commissioning Group

We are pleased to have a 'year in review' contribution from our local Parent Carer Forum:

The Isles of Scilly Parent Carers currently represents the families of 19 children and young people with SEND (Special Educational Needs and/or Disabilities). That is a fantastic 57% of the eligible cohort, sharing their lived experience, needs and views to inform and influence strategic decision making and service/policy/strategy development. We offer a wide range of perspective through a representative model, are pan disability and fully inclusive.

How do I know if I am eligible to join the Isles of Scilly Parent Carers? If you have a child or young person, from birth to 25, live in or receive services from the Isles of Scilly and your child has Special Educational Needs (will be on the SEN register at nursery, school or college) and/or a Disability then we would love to hear from you.

We have had a busy time following our amazing Genuine Partnerships event in April 2019 that so many of you joined and have been co-producing;

- The Isles of Scilly SEND Strategy and Action Plan was co-produced with parent carers, embedding their voice in both documents, also using the Genuine Partnerships Community feedback to inform us.
- A joint review of the Education, Health and Care Plan paperwork for Assessment and Annual Review took place, checking through all documentation as a group.
- We created a Local Offer website collaboratively with our Council, our parent carers and young people. Take a look at <https://www.localofferscilly.org.uk/> and let us know what you think. Review and development of the Local Offer is ongoing and feedback details are on the website.
- The Isles of Scilly Inclusion Charter was created jointly with parent carers and professionals all working together. Keep an eye out for the final Charter to be released shortly.
- Together with Children's Social Care we reviewed the current Short Breaks offer and statement. Parent Carers were able to share their views and needs for a Short Break and together a new Short Break Offer and Statement were co-produced to the draft stage.
- The forum is working with our Council to create the Preparing for Adulthood offer on the Isles of Scilly. This is a big piece of work and will be continuing in the new school year but we have held a workshop with parent carers to understand what their needs and support 'wishes' are. This has laid the foundation for our Isles of Scilly Offer. Please keep an eye out for further invitations to contribute to this exciting piece of work.

The forum has also represented their members' lived experience and views at the following;

- Healthwatch National Meeting – working together
- Local Government Association Assurance visit
- South West NHSE Autism & Neuro-disability Pathways rapid improvement event
- SENDIASS specification of new contract – Isles of Scilly
- As well as representation at the following meetings;
- One Vision Partnership Board
- One Vision Isles of Scilly
- SEND Liaison Group
- SEND Programme Board, Chair

Our work waiting for us when we return to school in September is;

- Continue to work with the Council to develop the Youth Participation Group and attract more participants. This is a fantastic opportunity for your young SEND person to contribute their voice to services and development on the Isles of Scilly. Please contact Helen McGuinness, Helen.McGuinness@scilly.gov.uk for more information or for your young person to sign up.
- Working with partner agencies (there is a lot!) to create the Isles of Scilly Preparing for Adulthood pathway.
- Working with our Health Partners on the Mental Health Pathway 16-25 yr olds and an exciting new project that we can't reveal yet.

Last Summer the group enjoyed an amazing day on St Martins, kayaking and snorkelling on a splendid day! We have also hosted a Christmas party for our young people and the grownups enjoyed getting together for a Christmas Dinner. We have also enjoyed a couple of evenings out for a meal, laughing and sharing. Covid and lockdown have affected how we work, as we would usually arrange meetings in a pub, with a meal, or alternatively arrange childcare to run alongside our meetings. Since lockdown we have had to rely on virtual and digital collection of experiences. We have also been able to enjoy virtual coffee meets, "Chuckle & Chat" as well as virtual Bingo evenings – an absolute hoot!

We are a friendly bunch who offer friendship and peer support to parent carers of SEND children and young people.
Please contact iosparentcarers@gmail.com or ring Tracy Smith, 422143 for more details.



Cherry Blossom Childcare has had its first year of being open and has joined in relevant SEND partnership working groups and meetings. Below is a few words on how they have made their nursery inclusive:

Here at Cherry Blossom Childcare we are delighted with the speed in which we have been able to build strong links with local and mainland partners to support children and families with SEND. We have worked closely with the Health Visitor, Community Nurse, Local Authority, Speech and Language Therapist, Children's Social Care, Five Island Academy and mainland medical specialists. The Early Help process enables us to support families and involve other relevant agencies - feedback on the process has been very positive. The staff team have quickly developed their skills in Makaton through internal staff training, SALT support and own research. Makaton is used every day with all children and is proving to be a positive tool for children who have delayed speech and/or SEND. The use of our online management system, Famly, allows parents to be part of their child's nursery experience and for us to work together to record their development journey. Being able to reassure parents, through comments and photos, that their child has settled well, has really helped to build our relationships. We believe strongly that in order to work positively together and sometimes initiate sensitive conversations, we first need to build the trust between parents and staff.



Celebrating Success:

Helen McGuinness:
IPSEA Level 2 Qualified

Rebecca Streeter:
National Award for SEN
Co-ordination

If there is something you would like to contribute to the next newsletter then please email us at:

localofferscilly@scilly.gov.uk

We are looking for young people who would like to contribute to the newsletter. If this is something that might interest you then please email us at:

localofferscilly@scilly.gov.uk

Future Developments

It is great to see the commitment, developments, and partnership working during this academic year with the goal of improving the lives of children and young people with SEND on the Isles of Scilly. Going forward, we are focusing on Preparation for Adulthood and the transition phases from 0 to 25. We also want to improve the ways in which we include young people in their meetings to make sure their voices are heard.

And coming shortly... a chance to order your own max card!



**Council of the
ISLES OF SCILLY**